



# WQHL系列轻型焊接滑轮

Series WQHL Light Welding Pulley

2020年7月版 Jul, 2020 Edition



**宁波伟隆港口机械有限公司**

NINGBO WEILONG PORT MACHINERY CO., LTD.

**宁波伟隆传动机械有限公司**

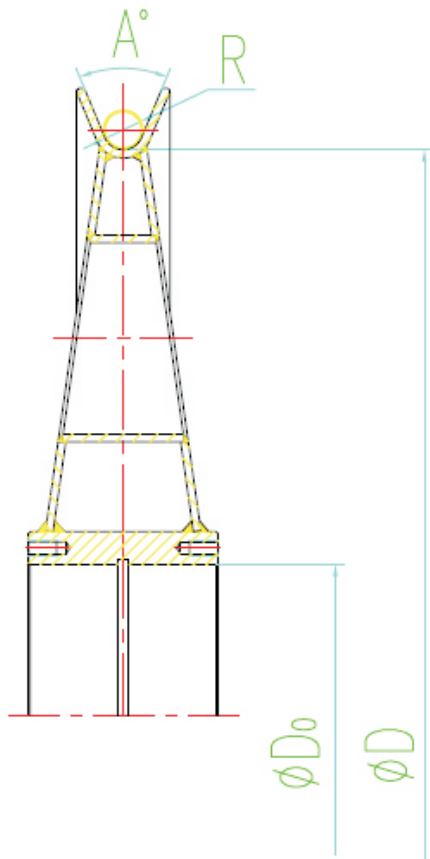
NINGBO WEILONG TRANSMISSION MACHINERY CO., LTD.



## 一、WQHL系列焊接滑轮性能及优势

我公司生产的WQHL系列焊接轻型滑轮，滑轮绳槽通过冷加工成形后，再与支承幅板、轴承套焊接而成。滑轮绳槽技术要求符合GB/T3811-1983等标准，可以广泛用于集装箱岸桥、抓斗式卸船机、场桥轮胎吊、轨道吊等各种运行频繁的起重机场合，其突出优点如下：

- ◇冷轧绳槽，组织致密，抗磨损，抗压痕（特殊定货HRC58-62）。（经热处理硬度HB180-300，HRC35-55可任选）
- ◇薄壁压筋箱型结构，安全度高，可承受重载、短期超载。
- ◇制造精度高，绳槽底径跳动小于1/1000直径，绳槽壁端跳动小于2/1000直径。
- ◇闭式结构，免维护，五年不必加油（必须工厂装配好轴承出厂）。设有补油孔，5年后略补油可持续10年不再加油。
- ◇质量轻，转动惯量小，适合频繁启动制动。



## I、Performance and advantage of Series WQHL Light welding pulley

The design technology of the pulley can reach the requirements of GB/T3811-1983: first cold machining of the pulley groove, then weld to the supporting plate and bearing housing. It can widely used for Container Quayside Crane, Grab Chip Unloader, RTG, RMG, and so on. And it has advantages as follow:

- ◇Compact structure, high ability of anti wearing and pressing. (special order can reach HRC58-62) (The heat treatment hardness can be HB180-300, HRC35-55)
- ◇Box-type structure, high safety, can endure heavy load and short term over load.
- ◇High precision, runout at groove bottom less than 1/1000 diameter, and runout at groove wall less than 2/1000of diameter.
- ◇Closed structure, no maintenance, no need to add oil for 5 years(bearing installed before leaving factory) . With oil adding hole, little oil added after 5 years can last for another 5 years.
- ◇Small weight and rotational inertia, fit for frequently run or stop.





## 二、WQHL系列焊接滑轮订货型号

## II、Order type of Series WQHL Light welding pulley

WQHL- D × R A

D:滑轮绳槽底径; R:绳槽半径; A:绳槽角度  
D:Bottom diameter; R:Radius; A:Angle

我公司生产WQHL轻型焊接滑轮，可以完全替代现行桥吊、卸船机、场桥起重机械上的各类精铸和热轧滑轮，最大规格最大为φ1600mm，常见规格表：

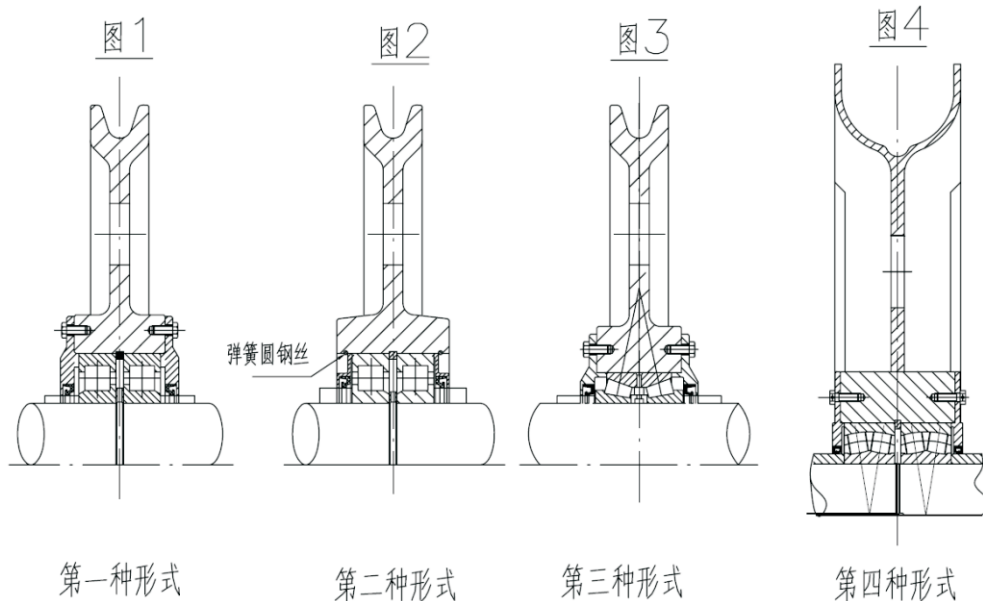
The series WQHL light welding pulley of our company can totally instead the kinds of the currently precision casting roller and hot-rolling pulley using in crane, ship unloader and so on. The largest scale is φ1600mm, and the normal scales are as follow:

滑轮型号 Type	适用钢丝绳直径d Wire rope diameter	滑轮槽直径D Groove diameter	滑轮内孔直径D5 Inner hole diameter		
			1	2	3
WQHL-12/16 × 400	12-16	400	125	130	
WQHL-12/16 × 500	12-16	500	125	130	
WQHL-20/28 × 650	20-28	650	200		
WQHL-20/28 × 750	20-28	750	200	230	
WQHL-28/32 × 560	28-32	560	240		
WQHL-28/32 × 850	28-32	850	240		
WQHL-28/32 × 900	28-32	900	240	290	
WQHL-28/32 × 950	28-32	950	240	290	
WQHL-30/38 × 700	30-38	700	125		
WQHL-30/38 × 800	30-38	800	125	270	
WQHL-30/38 × 900	30-38	900	270	290	
WQHL-30/38 × 950	30-38	950	270	290	
WQHL-30/38 × 1000	30-38	1000	290	320	
WQHL-35/40 × 1100	35-40	1100	360		
WQHL-38/40 × 1200	38-40	1200	360		
WQHL-40/48 × 1400	40-48	1400	360		
WQHL-52/54 × 1600	52-54	1600	360		
WQHL-52/54 × 1800	52-54	1800	460		
WQHL-52/54 × 2100	52-54	2100	460		



### 三、滑轮常见安装形式

### III、 Normal installing form



根据轴承选用的不同，滑轮安装主要分以下四种：

第一种形式：两个单列圆柱滚子轴承，端盖用螺栓固定，常规安装。

第二种形式：两个单列圆柱滚子轴承，端盖用卡簧（或圆钢丝）固定，易拆装。

第三种形式：单个双列圆锥滚子轴承，端盖用螺栓固定，用于轴向力大情况。

第四种形式：两个调心滚子轴承，端盖用螺栓固定主要用于超大滑轮。

According to the different choosing bears, there are four forms:

Form 1: Two single-row cylindrical roller bearing, use bolts to fix cover, normally installed.

Form 2: Two single-row cylindrical roller bearing, use clamp spring or steel wire to fix, easy for dismounting.

Form3: single double-row tapered roller bearing, use bolts to fix cover, using for the condition of large axial force.

Form 4: two self aligning roller bearing, use bolts to fix cover, special design for huge pulley.

# 宁波伟隆港口机械有限公司

## NINGBO WEILONG PORT MACHINERY CO., LTD.

# 宁波伟隆传动机械有限公司

## NINGBO WEILONG TRANSMISSION MACHINERY CO., LTD.

地址：中国宁波市梅湖创新工业园区  
四香路1号

电话：(86)574-88372266 83066266

传真：(86)574-88372264 88373712

邮编：315121

公司网站：<http://www.weilongme.com.cn>

电子信箱：[weilong@weilongme.com.cn](mailto:weilong@weilongme.com.cn)

服务热线：(86)574-88373131 88395022

Addr: No.1, Si Xiang Lord, Meihu Innovation  
Industrial Zone, Ningbo, China

Tel: (86)574-88372266 83066266

Fax: (86)574-88372264 88373712

P.C.: 315121

Web-site: <http://www.weilongme.com.cn>

E-mail: [weilong@weilongme.com.cn](mailto:weilong@weilongme.com.cn)

serve-online: (86)574-88373131 88395022